

### What is R&M?

R&M is a discipline that utilises tools and techniques for establishing, monitoring, assessing, proving and improving the Reliability and Maintainability characteristics of equipment.

If R&M is used during the design process it results in equipment that is **more cost effective**, throughout its life, to operate.

### About Aspire R&M

A complete range of specialist personnel are available who understand and analyse the product in terms of R&M and its interaction with the design, ensuring that the operational effectiveness is maximised whilst still achieving optimised through life costs.

Aspire routinely provide comprehensive R&M Cases. The R&M Case is a reasoned, auditable argument created to support the contention that a defined system satisfies the R&M requirements.



### Aspire R&M Services:

- Proposal preparation
- Programme tailoring and management
- R&M tasking
- R&M Case preparation
- In-service R&M support
- Reliability and Maintainability Trials
- Reliability Demonstrations
- R&M Modelling including Scenario Modelling
- R&M Allocation & Prediction
- Fault Tree Analysis (FTA)
- FMEA / FMECA / DMEA
- Reliability Centred Maintenance (RCM)
- Critical Items Lists
- FRACAS / DRACAS
- Requirement capture and flow down
- Maintainability Analysis
- Qualification Testing
- Testability Analysis etc.
- Monte Carlo Analysis
- R&M Model Development & Construction

**For More Information** about our R&M services please **CONTACT US**. We will arrange for a Subject-Matter-Expert to talk to you.

# Aspire



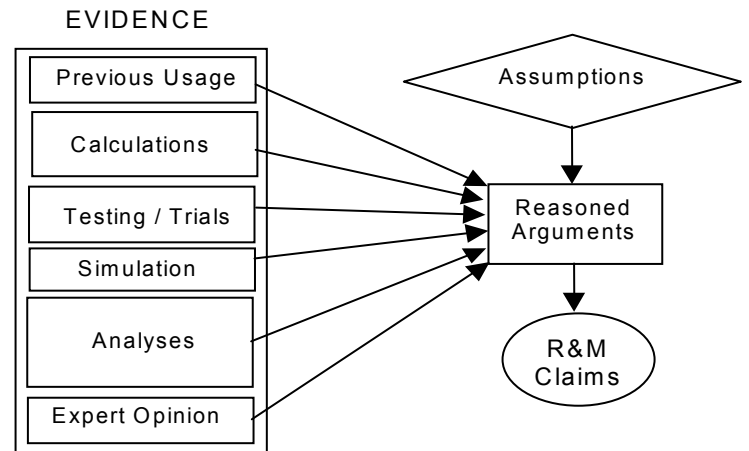
## Benefits of Aspire R&M

Use of the Aspire R&M Engineering approach and products provides the following benefits:

- ❑ Tailored approach based on the exact needs of the programme reducing the cost of delivering the final Support Solution
- ❑ Pragmatic, practical approach to problem solving
- ❑ Knowledge of R&M activities within an overall Supportability Engineering Programme
- ❑ Extensive IT skills can be deployed to develop prototype software and support R&M activities
- ❑ Ability to translate concepts and theory into practical solutions or processes
- ❑ Through Life Management Planning and Through Life Costing capabilities



**For More Information** about our R&M services please **CONTACT US**. We will arrange for a Subject-Matter-Expert to talk to you.



## Aspire R&M Capability

R&M support and management including:

- ❑ Proposal preparation
- ❑ Programme tailoring and management
- ❑ R&M tasking
- ❑ R&M Case preparation
- ❑ In-service R&M support
- ❑ Reliability and Maintainability trials
- ❑ Reliability Demonstrations
- ❑ Training in R&M Principles & Techniques

## Extensive experience of R&M techniques including:

- ❑ R&M Modelling including scenario modelling
- ❑ R&M Allocation & Prediction
- ❑ Fault Tree Analysis (FTA)
- ❑ FMEA / FMECA / DMEA
- ❑ Reliability Centered Maintenance (RCM)
- ❑ Critical Items Lists
- ❑ FRACAS / DRACAS
- ❑ Requirement capture and flow down
- ❑ Maintainability Analysis
- ❑ Qualification Testing